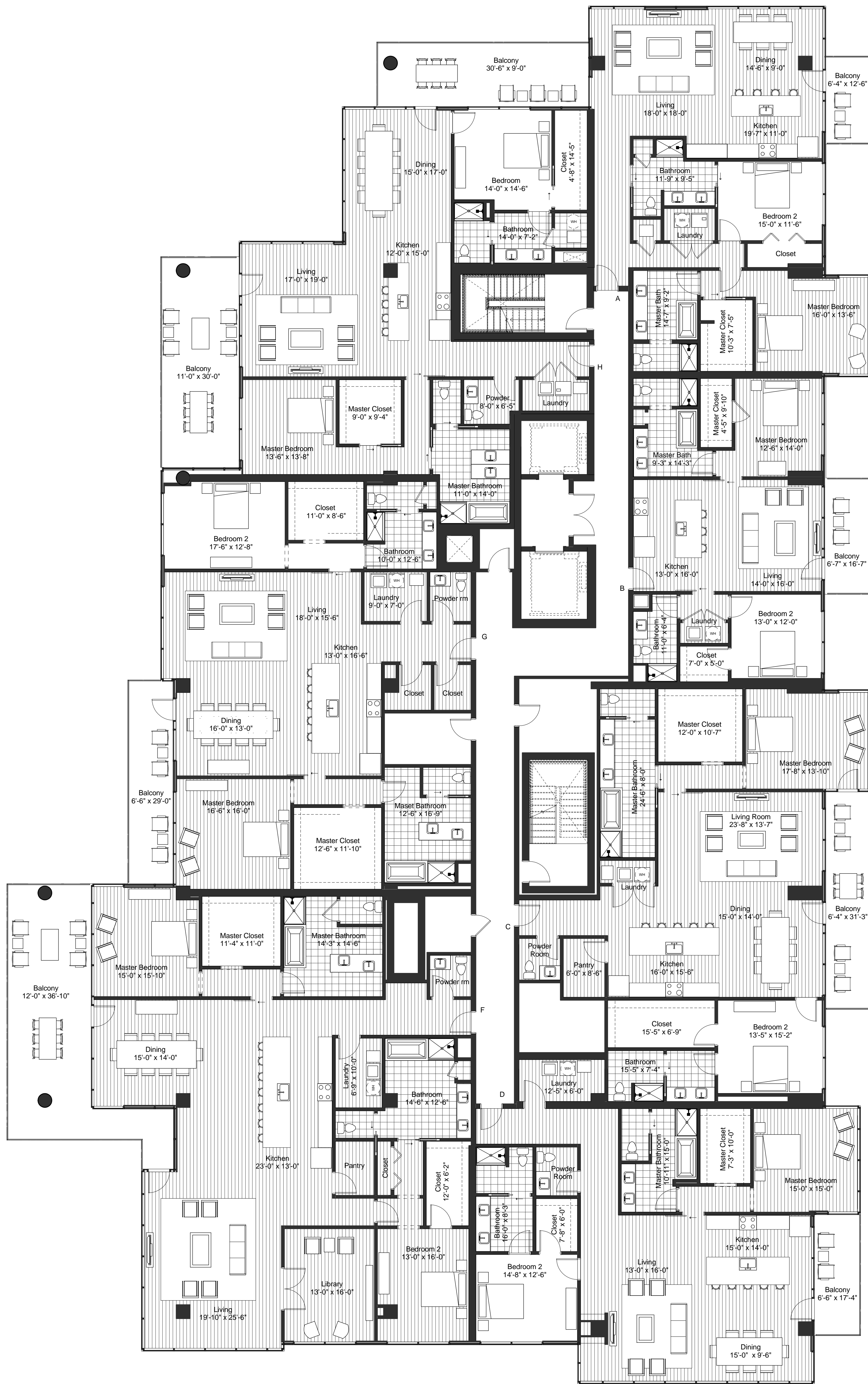


UNIT H
2 BR/2.5 BA
2,100sf

UNIT G
2 BR/2.5 BA
2,400sf

UNIT F
2 BR/2.5 BA + DEN
3,100sf



UNIT A
2 BR/2 BA
1,750sf

UNIT B
2 BR/2 BA
1,200sf

UNIT C
2 BR/2.5 BA
2,130sf

UNIT D
2 BR/2.5 BA
2,030sf